



# EnergyWall U-ERV HORIZONTAL WITH HOOD

## U-ERV: DIMENSION DATA

MODEL	U-ERV-600	U-ERV-1200	U-ERV-1800	U-ERV-2400	U-ERV-3000	U-ERV-3600	U-ERV-4200	U-ERV-4800	U-ERV-5400	U-ERV-6000
A- NO HOOD (IN)	12	24.13	36.25	48.38	60.5	72.63	84.75	96.88	109	121.13
A- W/ HOOD (IN)	12.25	24.38	36.5	48.63	60.75	72.88	85	97.13	109.25	121.38
A- W/ HOOD & DAMPER	12.25	24.38	36.5	48.63	60.75	72.88	85	97.13	109.25	121.38
B- NO HOOD (IN)	68.38	68.38	68.38	68.38	68.38	68.38	68.38	68.38	68.38	68.38
B- W/ HOOD (IN)	83.18	83.18	83.18	83.18	83.18	83.18	83.18	83.18	83.18	83.18
B- W/ HOOD & DAMPER	96.68	96.68	96.68	96.68	96.68	96.68	96.68	96.68	96.68	96.68
C- NO HOOD (IN)	1	1	1	1	1	1	1	1	1	1
C- W/ HOOD (IN)	9.04	16.04	23.04	30.04	37.04	44.04	51.04	58.04	65.04	72.04
C- W/ HOOD & DAMPER	15.7	22.7	29.7	36.7	43.7	50.7	57.7	64.7	71.7	78.7
D- NO HOOD (IN)	13.13	13.13	13.13	13.13	13.13	13.13	13.13	13.13	13.13	13.13
D- W/ HOOD (IN)	18.66	25.66	32.66	39.66	46.66	53.66	60.66	67.66	74.66	81.66
D- W/ HOOD & DAMPER	24.90	31.90	38.90	45.90	52.90	59.90	66.90	73.90	80.90	87.90
DUCT DIMENSIONS (IN)	12.13X12.13	12.13X24.25	12.13X36.38	12.13X48.5	12.13X60.63	12.13X72.75	12.13X84.88	12.13X97	12.13X109.13	12.13X121.25

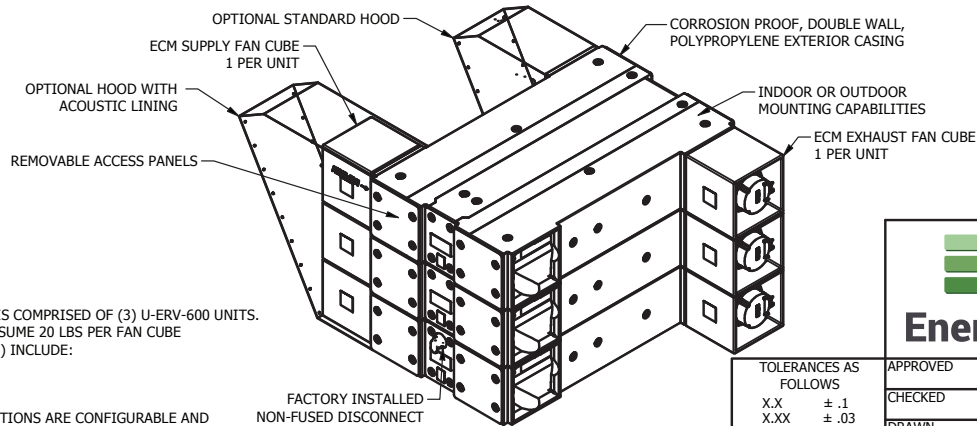
## U-ERV: PERFORMANCE DATA

PERFORMANCE SPEC	U-ERV-600	U-ERV-1200	U-ERV-1800	U-ERV-2400	U-ERV-3000	U-ERV-3600	U-ERV-4200	U-ERV-4800	U-ERV-5400	U-ERV-6000
CFM RANGE	75-700	150-1400	225-2100	300-2800	375-3500	450-4200	525-4900	600-5600	675-6200	750-7000
EXTERNAL STATIC	Up to 2" w.c.	Up to 2" w.c.	Up to 2" w.c.	Up to 2" w.c.	Up to 2" w.c.	Up to 2" w.c.	Up to 2" w.c.	Up to 2" w.c.	Up to 2" w.c.	Up to 2" w.c.
SENSIBLE EFFICIENCY	73	73	73	73	73	73	73	73	73	73
LATENT EFFICIENCY	63	63	63	63	63	63	63	63	63	63
TOTAL EFFICIENCY	69	69	69	69	69	69	69	69	69	69
COOLING ENERGY FROM COIL (BTUs/Hr)	18000	36000	54000	72000	90000	N/A	N/A	N/A	N/A	N/A
HEATING ENERGY FROM COIL (BTUs/Hr)	18000	36000	54000	72000	90000	N/A	N/A	N/A	N/A	N/A

## U-ERV: SYSTEM DATA

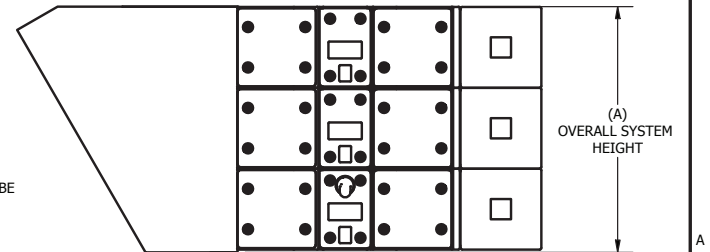
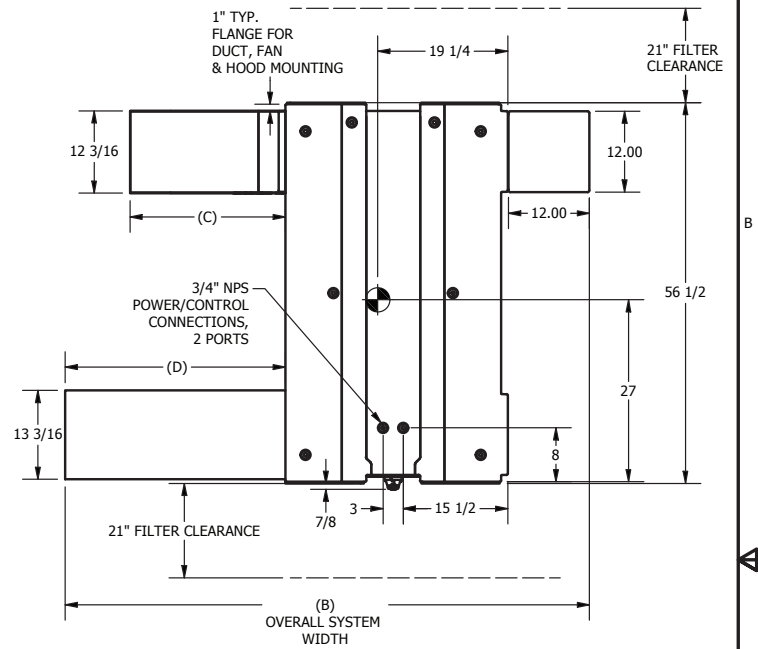
MODEL	U-ERV-600	U-ERV-1200	U-ERV-1800	U-ERV-2400	U-ERV-3000	U-ERV-3600	U-ERV-4200	U-ERV-4800	U-ERV-5400	U-ERV-6000
FAN QUANTITY	2	4	6	8	10	12	14	16	18	20
VOLTAGE	208-277VAC	208-277VAC	208-277VAC	208-277VAC	208-277VAC	208-277VAC	208-277VAC	208-277VAC	208-277VAC	208-277VAC
PHASE	1	1	3	3	3	3	3	3	3	3
FREQUENCY (HZ)	50/60	50/60	50/60	50/60	50/60	50/60	50/60	50/60	50/60	50/60
MCA (A)	8.3	15.1	13.3	20.2	27	25.2	32.1	38.9	37.1	44
MOP (A)	15	20	15	25	30	30	35	40	40	45
SYSTEM WEIGHT (LBS)*	96.0	187.0	278.0	369.0	460.0	551.0	642.0	733.0	824.0	915.0
SYSTEM WEIGHT-W/ HOOD (LBS)*	108	210	315	434	550	668	790	915	1043	1175
SYSTEM WEIGHT-W/ HOOD & DAMPER (LBS)*	139	268	401	557	704	856	1013	1173	1339	1509

\*SEE NOTES



**NOTES:**

- U-ERV-1800 MODEL SHOWN IN DRAWING, THIS IS COMPRISED OF (3) U-ERV-600 UNITS.
- FAN CUBE WEIGHT NOT INCLUDED IN TABLE, ASSUME 20 LBS PER FAN CUBE
- OPTIONAL FEATURES (NOT SHOWN IN DRAWING) INCLUDE:  
-ROTARY FACE AND BYPASS DAMPER  
-HYDRONIC COIL OR DX COIL  
-MERV 11/13 SUPPLY FILTER
- FAN TYPES, FILTER CLEARANCES, AND FAN LOCATIONS ARE CONFIGURABLE AND LOCATIONS ARE SUBJECT TO CHANGE BASED ON SPECIFIC PROJECT REQUIREMENTS



				PROJECT					
				SUBMITTAL DRAWING					
TITLE				U-ERV HORIZONTAL ORIENTATION WITH HOOD					
PART NUMBER				N/A					
APPROVED		SIZE		CODE		DWG NO		REV	
CHECKED		B				N/A		0	
DRAWN		SCALE						SHEET 1 OF 1	
Manny Esteves		1/27/2021		.055					